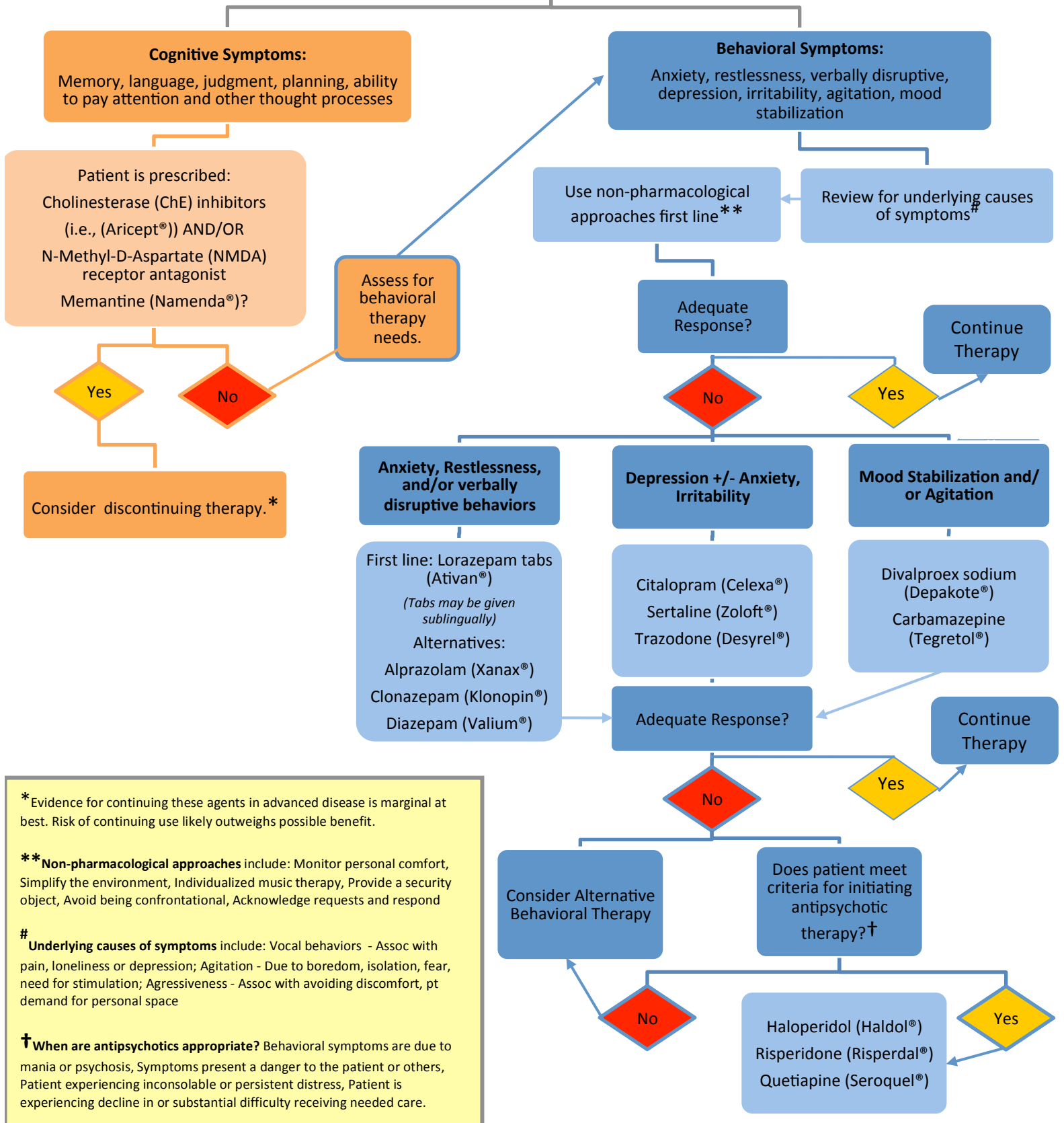


Primary Diagnosis of Dementia



* Evidence for continuing these agents in advanced disease is marginal at best. Risk of continuing use likely outweighs possible benefit.

** Non-pharmacological approaches include: Monitor personal comfort, Simplify the environment, Individualized music therapy, Provide a security object, Avoid being confrontational, Acknowledge requests and respond

Underlying causes of symptoms include: Vocal behaviors - Assoc with pain, loneliness or depression; Agitation - Due to boredom, isolation, fear, need for stimulation; Agressiveness - Assoc with avoiding discomfort, pt demand for personal space

† When are antipsychotics appropriate? Behavioral symptoms are due to mania or psychosis, Symptoms present a danger to the patient or others, Patient experiencing inconsolable or persistent distress, Patient is experiencing decline in or substantial difficulty receiving needed care.